

# FEI LA NEWS

Where Engaged Finance Leaders Thrive

# 90

 years

## In this Issue

### In Case You Missed It

A recap of our October meeting, how simple, intentional skills can strengthen relationships, boost presence, and elevate leadership.

### President's Message

Starting strong and staying connected.

### November's Event

"Hands-On AI for Finance Leaders"  
with Julia Kozlov

### Spread the Holiday Cheer

FEI will brighten the light for families relying on the Los Angeles Ronald McDonald House this holiday season.

## The Art of Connecting

October's dinner with **Christi Haley Stover**, CEO of Platinum Resource Group, reminded us that leadership begins within. Her session, *The Power of Mindset, Language & Intention*, explored how reframing thoughts, managing energy, and genuine curiosity shape connection and performance.

She challenged members to audit their inner dialogue, project a grounded "executive signal," and make space between stimulus and response. A memorable takeaway—"left eye to left eye"—when speaking with someone looking into their left eye drives deeper rapport because you are engaging with the other's emotional and relational brain.

Christi's blend of neuroscience, language, and energy awareness offered a refreshing human dimension to our data-driven world. It was an inspiring reminder that clarity, calm, and connection are leadership's true differentiators.

**"Always remember 'left eye to left eye' engagement."**

**- N Koutouras**



**Starting Strong**

Our new year is off to a fabulous start!

We have held two amazing dinner events with exceptional speakers providing inspirational presentations on Leadership and the Art of Connecting. A huge thank you to David Baker and Christi Haley Stover for sharing their insights with our membership!

Speaking of our members, one of our very own, Julia Kozlov, will be presenting at our next dinner event on Thursday, November 20th. Julia will be leading an interactive session with practical tips for how you can make AI work for you and your Finance department. This session will be a great opportunity for you to discuss and directly build cutting-edge AI capabilities.

AI has been identified by all of you as a critical enabler so do not miss this opportunity to learn from one of the best! I will see you there!

Thank you

**Jason Shapiro**  
**FEI Los Angeles President**

**November's Meeting**  
 Hands-On AI for Finance Leaders



*Julia Kozlov*

Join us for an interactive, hands-on AI workshop with **Julia Kozlov**, designed exclusively for finance leaders who want to move beyond theory and into practice.

Through live demos, scenario games, and peer exercises, you'll sharpen your prompting skills, explore real-world Custom GPTs—including FEI LA's Membership Match GPT and Vendor Cleanup GPT—and even build your own starter GPT tailored to recurring tasks.

This session is highly interactive—bring a laptop or iPad if you can (not required) and leave with both

tactical wins and a strategic action plan to put AI to work immediately.

Don't miss this opportunity to learn from one of our own as she shares so we all can get inspired. Program starts at **5:15 p.m. at City Club LA**. [Click here to register.](#)

**Spread the Holiday Cheer**  
 with FEI Los Angeles

Join FEI Los Angeles in **early December** at the **U.S. Bank offices in Glendale** for a heartwarming volunteer event. Together, we'll assemble holiday gift bags filled with comfort and a touch of holiday magic for families staying at the Los Angeles Ronald McDonald House.



This annual tradition embodies the spirit of giving—bringing together members, sponsors, and friends to share time, resources, and compassion with families navigating difficult moments. Your participation—whether through volunteering or contributing funds—will help brighten their holidays and remind these families they're not alone.



*FEI Elves from 2024's event*

More details and sign-up information will follow soon. Let's unite to make this season a little brighter for others and celebrate the true meaning of community.

# Sponsors - The Power Behind FEI Los Angeles

FEI Los Angeles sponsors represent extraordinary scale and influence:

- Banks holding over **\$4 trillion in assets**,
- Advisory firms employing **over 300,000 professionals globally**,
- Staffing partners completing **100,000+ placements annually**,
- Media organizations reaching **millions of business readers each week**, and
- One of the nation's top accounting schools **preparing thousands to lead** with integrity and insight.

The thought leaders at our sponsor firms are more than peers—they drive the ideas, access, and impact defining our community. Their leadership keeps FEI Los Angeles informed, prepared, inspired, and relevant.

To our members: when the opportunity arises, please remember to **BUY FEI** and support those who support us.

**Platinum Sponsors**

**Gold Sponsors**

**FEI Los Angeles By the Numbers**

Two-Year Member Growth

40%

One of the Fastest Markets in the Nation

Member Engagement

65+ 86%

Dinner Attendance Member Engagement % (2024 KPI Top 5 Nationally)

LinkedIn Followers

971

2026 Goal of 1,250

**90** years

# My WHY

FEI is a community where individuals can thrive

"I believe we're at our best when we help communities—and the individuals within them—thrive. FEI gives me the platform to do exactly that. It connects me with peers who share a commitment to learning, leading, and elevating our profession. Through our programs, I can spark ideas, challenge assumptions, and create moments which help others grow. The relationships built here—between members, sponsors, and future leaders—are what make this community special. FEI reminds me leadership is not a title but a responsibility to lift others with curiosity, courage, and purpose."

**- Nicholas Koutouras, member since 2010**



**What is your WHY?** Contact us if you'd like to be featured here, at [LA.membership@financialexecutives.org](mailto:LA.membership@financialexecutives.org)

## 2025 - 2026 Officers



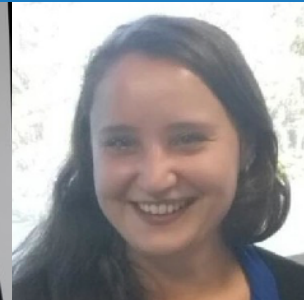
**Jason Shapiro**  
President



**Julia Kozlov**  
Membership



**Albert Gabri**  
Sponsorships



**Yuliya Kaminskaya**  
Treasurer



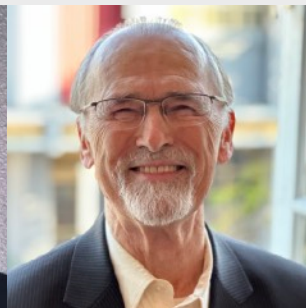
**Nicholas Koutouras**  
Programs & National



**Chandni Jalan**  
Secretary



**Mitchell Rusbarsky**  
Director &  
Past President



**Roger Stephens**  
Director &  
Past President



**Christine Bell**  
Administrator

# Join FEI Today!

**More than a network; FEI is where connections become community**

## Why Join FEI Los Angeles?

There's never been a better time to be part of FEI Los Angeles. Our members—senior-level financial executives—enjoy a unique mix of professional [growth, community, and camaraderie](#).

## Benefits of Membership:

- Join a **nationwide network** of **10,000+ senior finance leaders**.
- Access **engaging programming** through our dinner series and monthly peer-led lunches.
- **Build lasting relationships** across industries—both locally and nationally.
- Gain **actionable insights** from keynote speakers, panels, and national conferences.
- Tap into **exclusive resources**: members-only research, CPE webinars, special interest groups, leadership opportunities, and career support.
- Belong to a **trusted community** of peers and industry-leading sponsors where ideas, challenges, and solutions are shared openly.

## How to join:

FEI welcomes senior-level financial executives who meet at least one of the following:

- Hold a senior financial executive position (CFO, Controller, Treasurer, VP Finance, etc.).
- Have responsibility for financial policy or decisions at their organization.
- Meet minimum company size requirements (typically \$25M+ in annual revenue or equivalent).

Join us—you'll find connection, knowledge, and inspiration waiting.



[Click Here to Join](#)

# LA Times STUDIOS INSPIRATIONAL WOMEN Forum & Leadership Awards

**November 13 | Fairmont Miramar Santa Monica**

Join us for networking, panel discussions, and an awards dinner honoring the women leaders making an impact and driving innovation.

## Featured Speakers



**Angela Agrusa**  
Chair, US Class Action & Product Liability Litigation Managing Partner, Los Angeles  
DLA Piper LLP



**Jackie Aina**  
CEO & Co-Founder  
FORVR MOOD



**Halé Behzadi**  
U.S. Vice Chair, California  
BMO



**Jennifer Breslow**  
Head of Television,  
Mattel Studios  
Mattel



**Angel Jennings**  
Assistant Managing Editor  
Los Angeles Times



**Tina Knowles**  
Entrepreneur, Philanthropist, Designer, & New York Times #1 Best Selling Author  
Cécred & Perkwood Entertainment



**Melissa Magsaysay**  
Writer, Entrepreneur, and Host of *Live + Well* by LA Times Studios  
LA Times Studios



**Anna Magzanyan**  
President  
LA Times Studios



**Marne Martin**  
CEO  
Emburse



**Tina Sarkisyan**  
Founder & CEO  
Simple Steps Fertility



**Lara Shortz**  
Los Angeles Office Managing Partner & Employment Advice, Counsel & Executive Disputes Chair  
Michelman Robinson



**Anastasia Soare**  
CEO  
Anastasia Beverly Hills



**Dr. Patrick Soon-Shiong**  
Founder, Executive Chairman  
ImmunityBio



**Wendy Shimata**  
VP of Autonomous Systems  
Varda



**Tracy M. Holland**  
CEO / Founder  
Goodwill Brands



**Julie Uhrman**  
CEO & Co-Founder  
Angel City Football Club

**Buy tickets at [latimes.com/iw](https://latimes.com/iw)**