

FEI-LA NEWS

WHERE ENGAGED FINANCE LEADERS THRIVE



A Magical Start!

Our new FEI year kicked off in August with an incredible lunch event at the Magic Castle, graciously sponsored by **Insperty!** Our very own community member, Magician Mark Matsumoto, delivered an outstanding performance, setting the stage for an exciting year ahead at FEI Los Angeles!

Our monthly Dinner Speaker Series resumes on September 19th at the City Club! This first dinner will focus on providing us all with an opportunity to reconnect after the summer break.

Please join us for food, drink, and tales of summer glory - I look forward to seeing you there!

Jason Shapiro
Chapter
President



Our Speaker Series is LOCKED

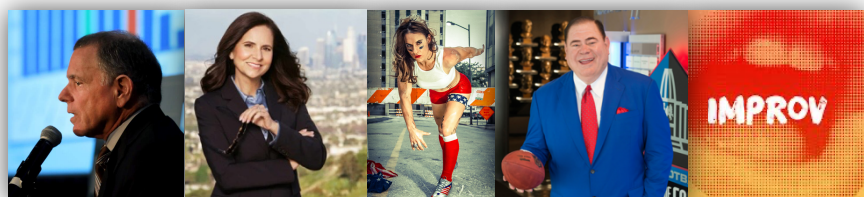
Financial Executives International (FEI) Los Angeles is a community where engaged finance leaders thrive. As a peer group we organize social events, informal events, and curate our monthly Speaker Series.

FEI Los Angeles is where we are informed, we are entertained, we form lasting peer connection, we grow, we are challenged, we elevate, we build influence...we thrive. Mark your calendar for all our upcoming events!

Our Speaker Series line up, all @ City Club LA unless noted:

- ✓ **Aug 16** - The Magic of Mark Matsumoto - SOLD OUT
- **Sep 19** - [FEI Los Angeles Mixer](#)
- **Oct 02** - AICPA Webcast [Riding the Waves of Finance](#) (virtual)
- **Oct 17** - [Interest Rate Forecast and Strategies](#) by rates expert, Tina Barker from PNC
- **Nov 21** - Deep Dive Workshop; topics TBD @ RSM Offices
- **Jan 16** - Dr Jerry's [UCLA economic forecast](#)
- **Feb 20** - The [Business of Food](#) with CFOs from Sunsweet and Vallarta Supermarkets moderated by Frances Moreno of Vaco
- **Mar 20** - [Breaking Ceilings](#) with Dr. Jen Welter, CMO of the Arena Football league and first female NFL Coach
- **Apr 17** - David Baker, Retired CEO of [NFL Hall of Fame](#)
- **May 15** - "Yes, and..." [Build Influence](#) with a workshop on storytelling and improvisational communication @ RSM Offices

Tell a friend, now is the time to join FEI Los Angeles



Sep 19, 2024
City Club LA
 Los Angeles, CA

Los Angeles Mixer



Reconnect with your friends and peers at our September mixer. Members of our community have been on the go...new jobs, international travel, family experiences, personal development, recommitment to fitness.

Also, we've grown. Meet our new members and partners. Lots of new faces.



555 S Flower St, 51st Floor
 Los Angeles, CA
 6p - 8p

DRESS IS BUSINESS CASUAL



Welcome to FEI - Los Angeles

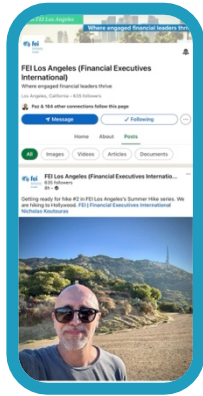
It's wonderful to see so many new faces since our last gathering. Over the summer, **eight** finance executives joined our group. We extend our thanks to the partners and members who continue to invite guests to our events. Word of mouth is key to growing our community of finance executives. Welcome to all!

- Vinia Anchiraico
- Robert Dika
- Joshua Fein
- Stacy Johns
- Michael Landan-Karny
- Rebecca Neary
- Stephen Shoemaker
- Roddy Yamachika
- Tyler Mahon - New Partner, Marsh & McLennan Agency
- Renee Hellman - New Partner, Marsh & McLennan Agency

Coming Events

- **Sep, 11, 12, 13, 24** - Area Lunches (No DTLA)
- **Sep 19**- Monthly Dinner, City Club DTLA
- **Oct 2** - AICPA Webcast on the [Riding the Waves of Finance](#) (virtual)
- **Oct 9, 10, 11, 29** - Area Lunches (No DTLA Lunch)
- **Oct 17** - [Interest Rate Forecast and Strategies](#) by rates expert Tina Barker from PNC
- **Nov 8, 12, 13, 14, 15, 26** - Area Lunches
- **Nov 21** - Deep Dive Workshop; topics TBD @ RSM Officers

ON THE ROAD TO 1,000 FOLLOWERS



Did you know that **FEI Los Angeles has over 650 followers?**

Please spread the word about FEI Los Angeles among your friends and colleagues. The power of our network lies in its diversity and the collective wisdom we bring to the table. By inviting others to join us, you are expanding your own network and also enriching the experiences of those around you.

Let's continue to elevate the standing of financial executives in Los Angeles together. We are on **all social platforms.**

Chapter Sponsors

We would like to extend our sincere thanks to our renewing Chapter Sponsors. We are proud to have achieved a 100% renewal rate, and your unwavering support is essential to the success of our finance community. We deeply appreciate your continued partnership

We are also excited to welcome our **new Platinum Sponsor, Marsh & McLennan Agency**. A special thank you to Tyler Mahon and Renee Hellman for joining our family and becoming an integral part of our vibrant community.

Members are the bedrock of FEI; sponsors are the lifeblood.

Platinum Sponsors



LOS ANGELES BUSINESS JOURNAL

Gold Sponsors



THREE THINGS TO DO THIS MONTH...

1 ENGAGE

Comment and contribute in our social media platforms. We like the "likes." We **love comments** "why" 'you like something.

2 ATTEND

Our dinner meetings are always the third Thursday of the month. Reserve the time on your schedules. Lunch is also a fantastic way to connect. We highly recommend attending.

3 BRING A FRIEND

There are plenty of ways to connect with your peers. We also welcome all prospective members. Our community is growing. Bring a friend.

Los Angeles Officers



Jason Shapiro

President



Carol Smith

VP Sponsorships



Yuliya Kaminskaya

Treasurer



Ruth Cantu

VP Membership



Nicholas Koutouras

VP Programs & National Liaison



Mitchell Rusbarsky

Director & Past President



Lisa Hylton

VP Programs - Elect



Roger Stephens

Director & Past President



Brian Parisi

Secretary



Christine Bell

Chapter Administrator

Invite a friend or colleague to
join. [Click here](#)



Advancing success through information,
community and advocacy since 1931.

Financial Executives International (FEI) is a leading association comprised of nearly 10,000 members who hold positions as Chief Financial Officers, Chief Accounting Officers, Controllers, Treasurers, and Tax Executives at companies in every major industry.

FEI enhances member professional development through peer connections, career management services, conferences, research and publications.

Members participate in the activities of more than 65 Chapters in the U.S. FEI is located in Morristown, NJ. FEI is where engaged financial leaders thrive.