

FEI LA NEWS

Where Engaged Finance Leaders Thrive

90 years



FEI Los Angeles Members and Sponsors enjoying lunch in Calabasas

In this Issue

In Case You Missed It

In November, FEI's Julia Kozlov challenged us to embrace AI as an essential tool shaping the future of work.

President's Message

Starting strong and staying connected.

January's Event

Economic Signals to Consider in 2026

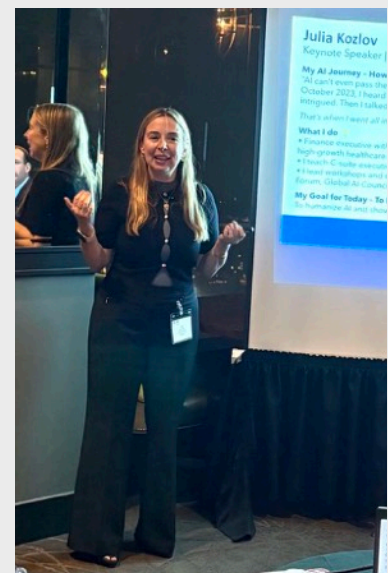
Coming Attractions

More ways to connect with FEI Los Angeles.

AI in Action - Engaging the Future

In November, FEI Los Angeles welcomed **Julia Kozlov**, an FEI member and a trusted voice on artificial intelligence. Just a few years ago, we introduced AI at an FEI LA meeting as a novelty—sharing a playful, *Seinfeld*-style script about the benefits of FEI membership. Since then, adoption has accelerated at a pace few technologies have ever matched.

Julia's session marked how far we have come. She led an engaging, hands-on discussion filled with real-world applications, prompt mastery, and practical insights into custom GPTs. The message was clear: AI is no longer optional. It is already reshaping how we work, think, and lead. Embrace it. Get curious. Get ready. AI is influencing more of your world than you may realize.



Julia Kozlov

[Follow Julia on LinkedIn for her articles, past podcasts, and upcoming speaking engagements. We are fortunate she's one of us!](#)



Happy New Year!

Our new year is off to a fabulous start!

I hope you and your loved ones had a wonderful holiday season and are excited for an amazing 2026 ahead!

I love this time of year - it is a natural point to reflect on the year past, catalog successes, identify opportunities for improvement, and plan for the year ahead.

At FEI-LA, we have enjoyed creating new connections, growing our community, and delivering WOW events throughout the past year!

We look forward to building our community further in 2026, starting with our **Economic Outlook** dinner event on January 15th at the City Club. I look forward to seeing you there!

Cheers to a great 2026 ahead!

Thank you

Jason Shapiro
FEI Los Angeles President

January's Meeting

Economic Signals to Consider



Dr. Clement Bohr

What do GDP, inflation, employment, and global forces *really* signal for your business in 2026? At our January dinner meeting, FEI Los Angeles welcomes **Dr. Clement Bohr, from UCLA Anderson School of Management**, for an insider's economic outlook designed for finance leaders making real-time decisions.

Dr. Bohr will cut through the noise to connect macroeconomic trends to practical implications for strategy, investment, and risk. Expect clear frameworks, timely context, and insights you can apply immediately in your organization. Join us January

15 for an engaging discussion that turns economic uncertainty into informed action.

Don't miss this opportunity to learn more about **turning economic uncertainty into informed action**. Program starts at **5:15 p.m. at City Club LA**. [Click here to register](#).

Other Upcoming Events

January 17 (Saturday) - FEI Los Angeles is coming together for a Meal of Love in support of Ronald McDonald House Charities of Los Angeles. Join us on January 17 for a hands-on volunteer experience as we prepare and serve a meal for families staying at the House, turning time, teamwork, and compassion into something truly meaningful. We're grateful to Danielle Parisi, who has volunteered as Head Chef and will share assignments and details as the event approaches! [Register here](#).



February 18 (Wednesday) - Join FEI Los Angeles for an exclusive behind-the-scenes tour of **Intuit Dome** on Wednesday, February 18.

Explore innovation, design, and technology shaping the NBA's newest arena. Registration details coming soon.

Sponsors - The Power Behind FEI Los Angeles

FEI Los Angeles sponsors represent extraordinary scale and influence. This scale enables the caliber of speakers, venues and experiences our members expect.

- Banks holding over **\$4 trillion in assets**,
- Advisory firms employing **over 300,000 professionals globally**,
- Staffing partners completing **100,000+ placements annually**,
- Media organizations reaching **millions of business readers each week**, and
- One of the nation's top accounting schools **preparing thousands to lead** with integrity and insight.

The thought leaders at our sponsor firms are more than peers—they drive the ideas, access, and impact defining our community. Their leadership keeps FEI Los Angeles informed, prepared, inspired, and relevant.

To our members: when the opportunity arises, please remember to **BUY FEI** and support those who support us.



Gold Sponsors



Our Community Continues to grow in person and online



FEI Los Angeles has surpassed 1,000 LinkedIn followers. While the number may seem modest, it signals something far more important: relevance, consistency, and trust.

For our members, it means broader visibility for ideas, insights, and leadership.

For our sponsors, it means deeper reach, stronger engagement, and a growing platform to connect with senior financial executives, and their non-finance peers, across Los Angeles and beyond.

Thank you for helping build momentum—together, we continue to strengthen a community where relationships and impact grow.

As we celebrate our 90th year, this digital momentum expands the reach of every conversation we host.

My WHY

Shaping the Conversations That Define Modern Finance Leadership

"I believe finance is a leadership function, not a back office one. Financial Executives International is where that belief becomes a reality. It is a room full of people who think critically, challenge assumptions, and care about doing the work well, especially as technology changes everything. Each speaker and panel gets straight to what finance executives actually care about. I serve on the board because I want to help shape those conversations and keep FEI relevant to how finance leaders operate today. The room is as strong socially as it is intellectually."

- Julia Kozlov, Member since 2023



What is your WHY? Contact us if you'd like to be featured here, at LA.membership@financialexecutives.org

2025 - 2026 Officers



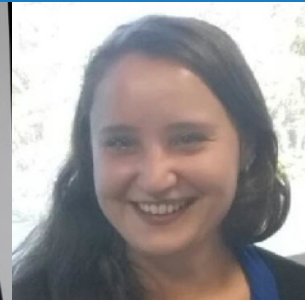
Jason Shapiro
President



Julia Kozlov
Membership



Albert Gabri
Sponsorships



Yuliya Kaminskaya
Treasurer



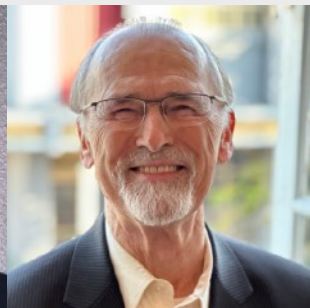
Nicholas Koutouras
Programs & National



Chandni Jalan
Secretary



Mitchell Rusbarsky
Director &
Past President



Roger Stephens
Director &
Past President



Christine Bell
Administrator

Join FEI Today!

Peers who stay engaged, contribute thoughtfully & growth compounds

Why Join FEI Los Angeles?

There's never been a better time to be part of FEI Los Angeles. Our members—senior-level financial executives—enjoy a unique mix of professional **growth, community, and camaraderie**.

What Sets FEI Los Angeles Apart

FEI Los Angeles is built for senior finance leaders who value depth over noise and trust over transactions. Our members engage in candid, peer-level conversations shaped by shared responsibility—not sales agendas or surface-level networking.

FEI provides an environment where real challenges can be discussed openly, perspectives can be tested honestly, and insight is shaped by leaders who have carried the weight of decision-making.

Benefits of Membership:

- Join a **nationwide network** of **10,000+ senior finance leaders**.
- Access **engaging programming** through our dinner series and monthly peer-led lunches.
- **Build lasting relationships** across industries—both locally and nationally.
- Gain **actionable insights** from keynote speakers, panels, and national conferences.
- Tap into **exclusive resources**: members-only research, CPE webinars, special interest groups, leadership opportunities, and career support.
- Belong to a **trusted community of peers and** industry-leading sponsors where ideas, challenges, and solutions are shared openly.

How to join:

FEI welcomes senior-level financial executives who meet at least one of the following:

- Hold a senior financial executive position (CFO, Controller, Treasurer, VP Finance, etc.).
- Have responsibility for financial policy or decisions at their organization.
- Meet minimum company size requirements (typically \$25M+ in annual revenue or equivalent).

Join us—you'll find connection, knowledge, and inspiration waiting.



[Click Here to Join](#)